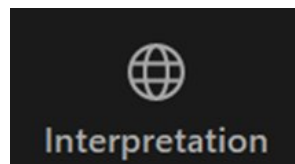


Partnering for **Vaccine Equity**



What are Social Determinants of Health and How They Matter
February 15, 2023



Zoom Webinar Features

- Participants will **remain muted** during this webinar, but you can use the **raised hand feature** to be unmuted to ask a question, OR
- Use **Q&A tab** in Zoom task bar to submit a question at any time
- **Live Spanish interpretation:** select your listening language in the Zoom toolbar (Globe icon)
- All **session materials and video recording** will be shared via our website and the P4VE listserv
- **Technical problems?** Email vaxequitylearning@urban.org

Today's Speaker



Dr. Grace Noppert
University of Michigan

THE SOCIAL DETERMINANTS OF HEALTH: WHAT THEY ARE AND WHY THEY MATTER

GRACE A NOPPERT | RESEARCH ASSISTANT PROFESSOR
INSTITUTE FOR SOCIAL RESEARCH | UNIVERSITY OF MICHIGAN



INSTITUTE FOR
SOCIAL RESEARCH
UNIVERSITY OF MICHIGAN



**SOCIAL AND ENVIRONMENTAL
EQUITY IN INFECTIOUS DISEASE LAB**

OBJECTIVES

By the end, you will be able to

1. Define what social determinants of health means
2. List examples of social determinants of health
3. Identify the places in your own work where you are addressing the social determinants of health

AGENDA

1. Key concepts, ideas, & terms
2. How do SDOH matter for health?
3. What might addressing the SDOH look like in practice?
4. Questions & Close-Out

A BIT ABOUT ME

Infectious
Disease



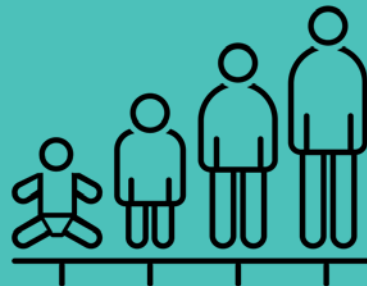
Social
Environment



Disrupting Health
Inequities



Biomarkers of
Aging



Poll #1

- Have you heard the terms social determinants of health?
 - 1. Yes! And I can tell you what they are
 - 2. Yes but I have no idea what they are
 - 3. No, but I'm ready to know what they are.

How do we define the SDOH

“Social determinants of health (SDOH) are the nonmedical factors that influence health outcomes. They are the conditions in which people are born, grow, work, live, and age, and the wider set of forces and systems shaping the conditions of daily life. These forces and systems include economic policies and systems, development agendas, social norms, social policies, racism, climate change, and political systems.”

- Centers for Disease Control and Prevention & World Health Organization

COMMON SDOH



Childhood experiences



Housing



Education



Social support



Family income



Employment



Our communities



Access to health services

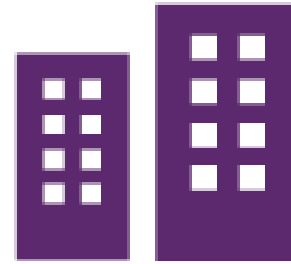
Source: NHS Health Scotland

Priority areas for addressing SDOH





Childhood experiences



Housing



Education



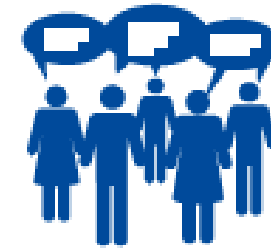
Social support



Family income



Employment



Our communities



Access to health services

Source: NHS Health Scotland

Many of these are at the individual-level. What shapes which people are in which environments with access to certain resources?

What shapes the SDOH?

FUNDAMENTAL CAUSES OF DISEASE

Comes from a paper titled “**Social Conditions as Fundamental Causes of Disease**” by Link & Phelan, 1995

Citation: Link, Bruce G., and Jo Phelan. "Social conditions as fundamental causes of disease." *Journal of health and social behavior* (1995): 80-94.

FUNDAMENTAL CAUSES OF DISEASE explained

There are four features of a **fundamental cause**:

1. It influences multiple disease outcomes
2. It affects disease outcomes through many different risk factors and/or pathways
3. It involves access to resources that could be used to avoid risk or to minimize the consequences of a disease when it happens
4. Reproduced over time through different pathways and/or risk factors

Examples of FUNDAMENTAL CAUSES OF DISEASE

- Structural racism
- Socioeconomic status (SES)
- Structural oppression
- Others?

Examples of FUNDAMENTAL CAUSES OF DISEASE

Structural racism: “forms of racism that are pervasively and deeply embedded in systems, laws, written (and unwritten policies), practices and beliefs that produce, condone, and perpetuate widespread unfair treatment of people of color.”

Source: Braveman, P. A., Arkin, E., Proctor, D., Kauh, T., & Holm, N. (2022). Systemic And Structural Racism: Definitions, Examples, Health Damages, And Approaches To Dismantling: Study examines definitions, examples, health damages, and dismantling systemic and structural racism. *Health Affairs*, 41(2), 171-178.

Examples of FUNDAMENTAL CAUSES OF DISEASE

Structural oppression: the many “ways that white/cisgender/heteronormative/ableist supremacy oppresses society, as well as the systematic and systemic ways that privilege is used to produce or reproduce inequities.”

Source: National Health Corps <https://www.nationalhealthcorps.org/addressing-structural-oppression>

Examples of FUNDAMENTAL CAUSES OF DISEASE

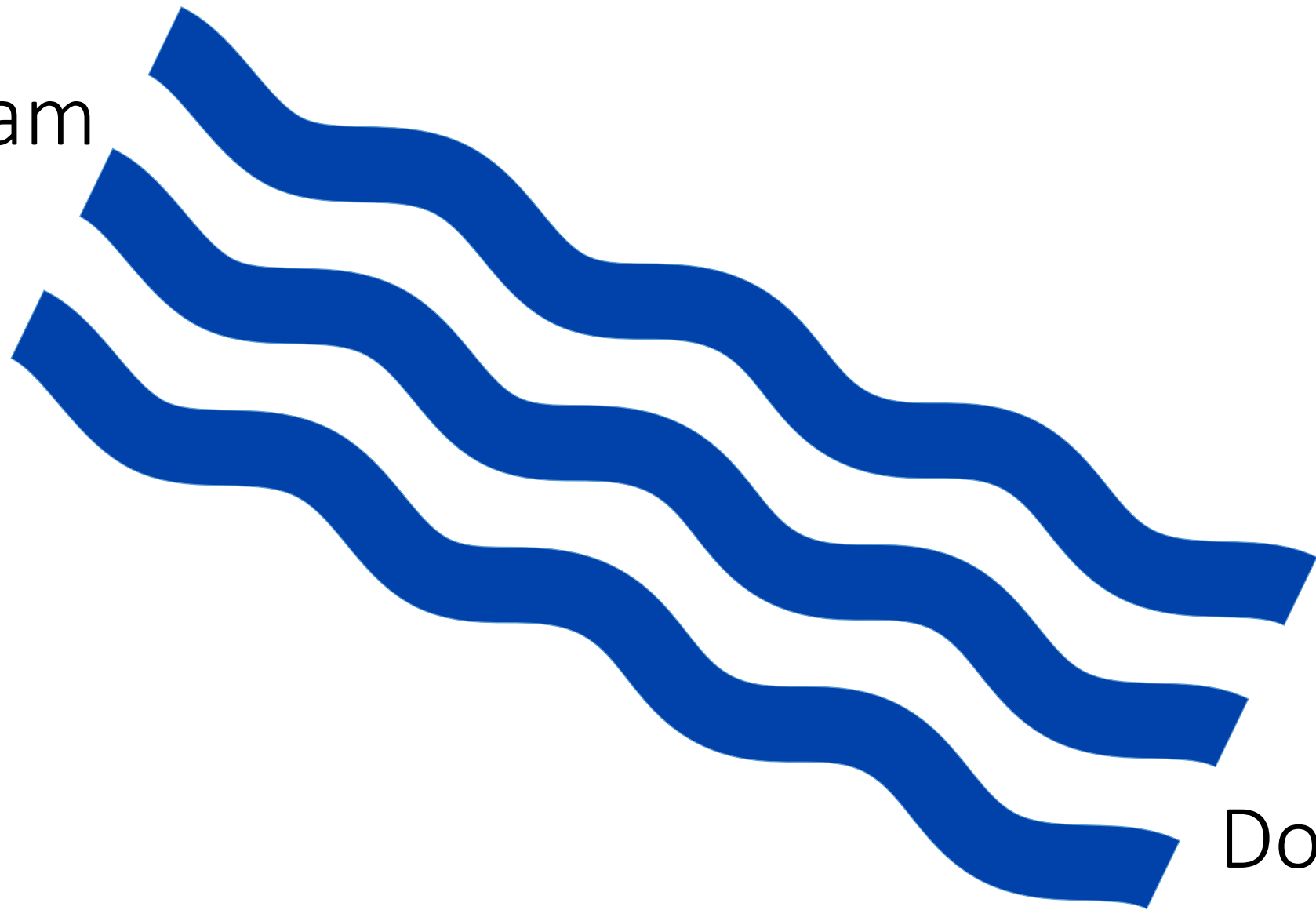
Socioeconomic Status (SES): the position of an individual or group in society—could include income, education, occupation, neighborhood

Source: <https://www.apa.org/topics/socioeconomic-status>

Examples of FUNDAMENTAL CAUSES OF DISEASE

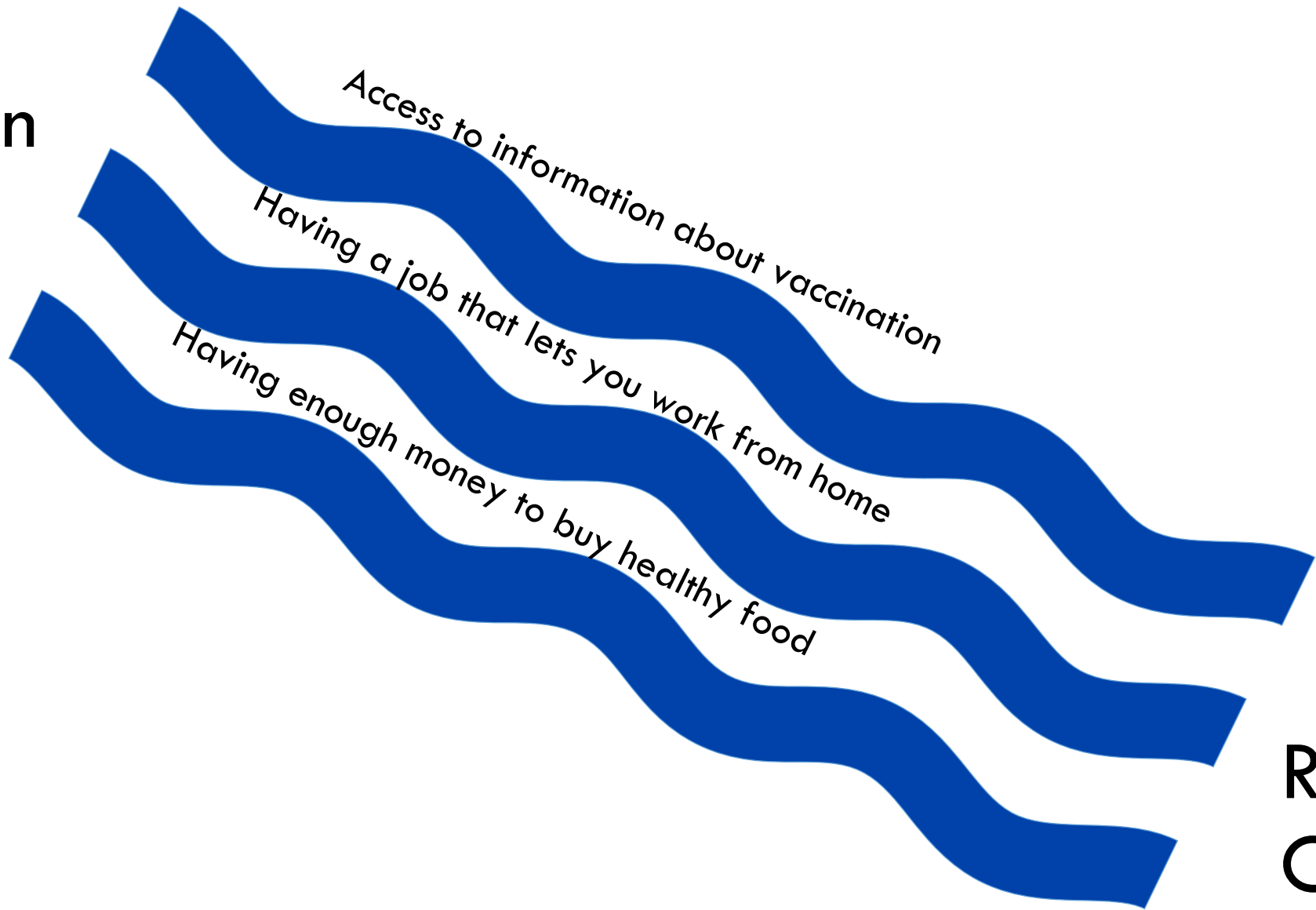
- Structural racism
- Structural oppression
- Socioeconomic status (SES)

Upstream



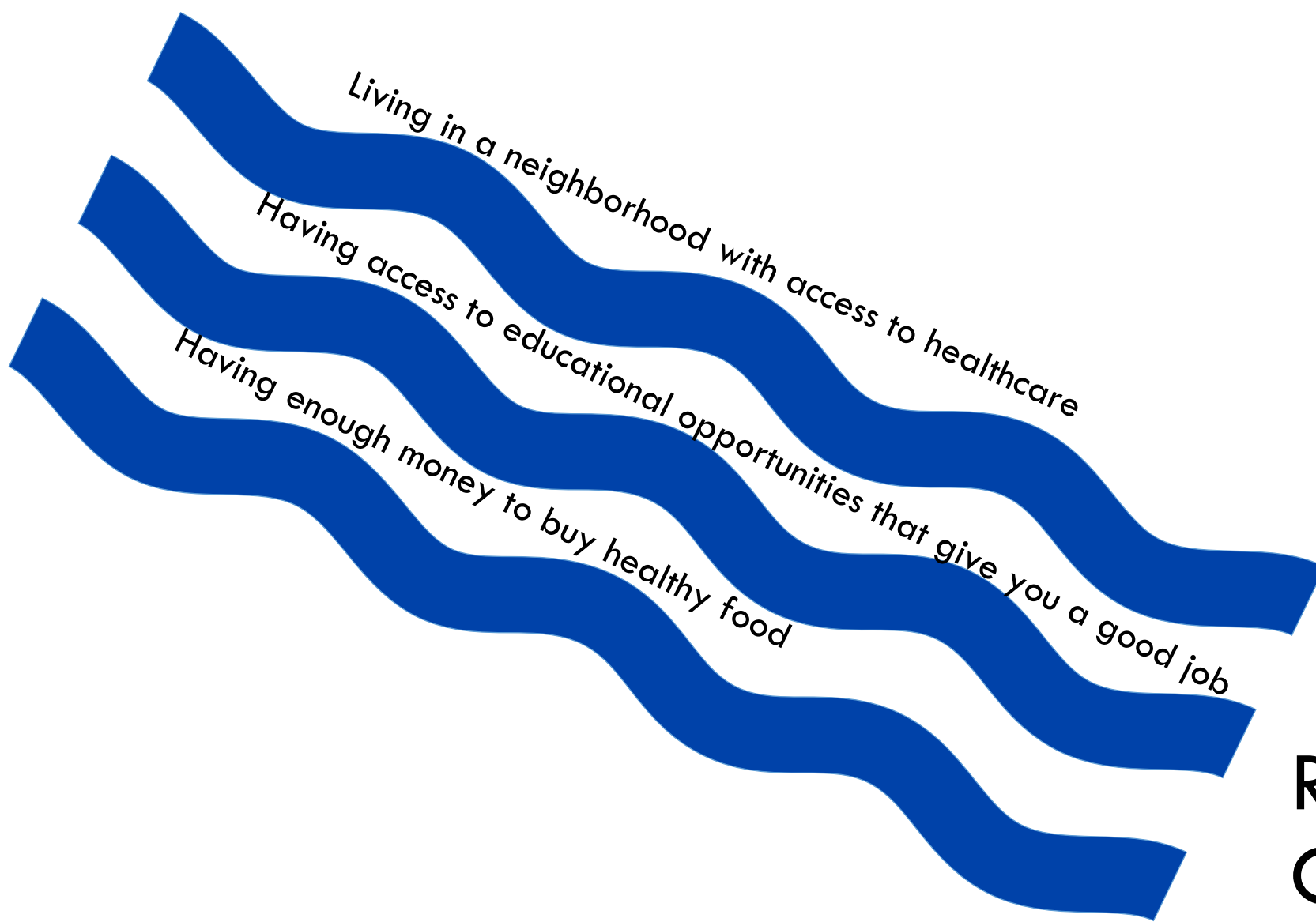
Downstream

Education



Risk of
COVID-19

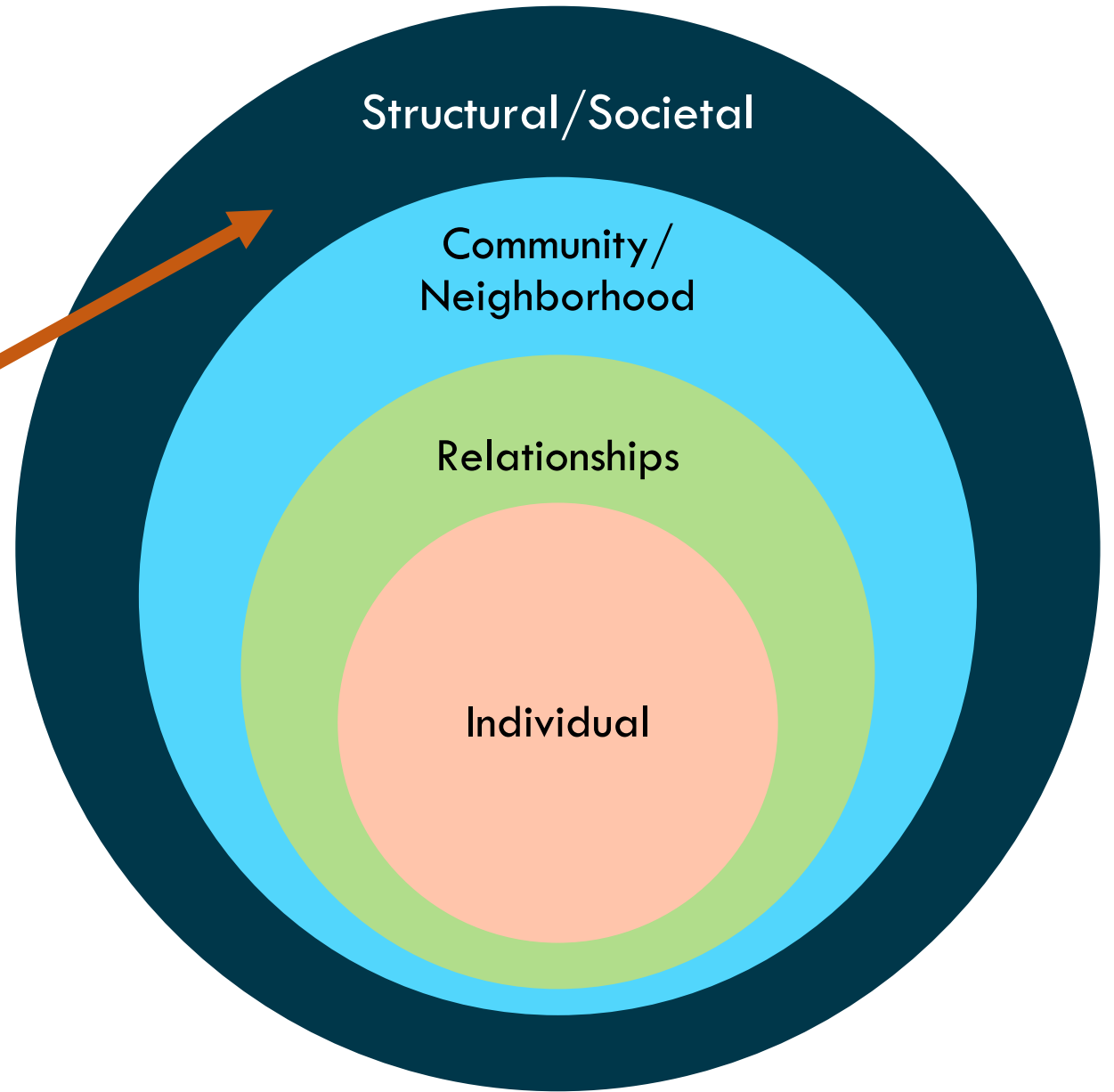
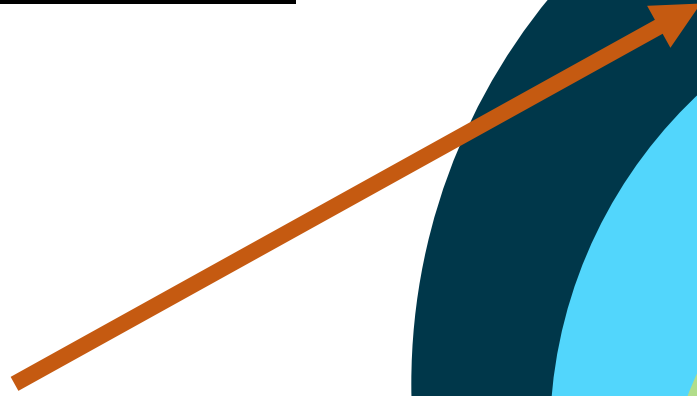
Structural Racism



Risk of
COVID-19

STRUCTURAL FORCES

Structural Racism
Structural Oppression



Social-Ecological Model:
<https://www.cdc.gov/violenceprevention/about/social-ecologicalmodel.html>



Childhood experiences



Housing



Education



Social support



Family income



Employment

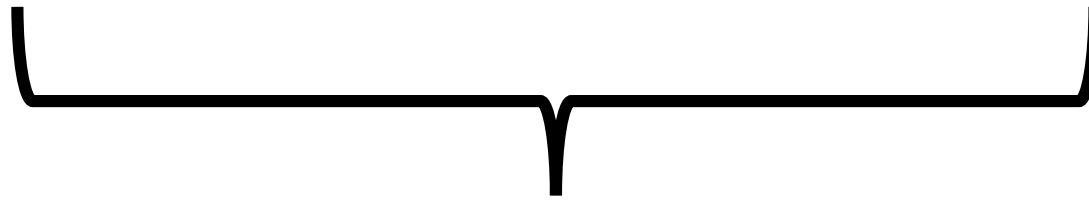


Our communities



Access to health services

Source: NHS Health Scotland



Structural Racism
Structural Oppression

Poll #2

- Where might access to healthy food fall on this schematic?
- What about the number of vaccination locations in your community?

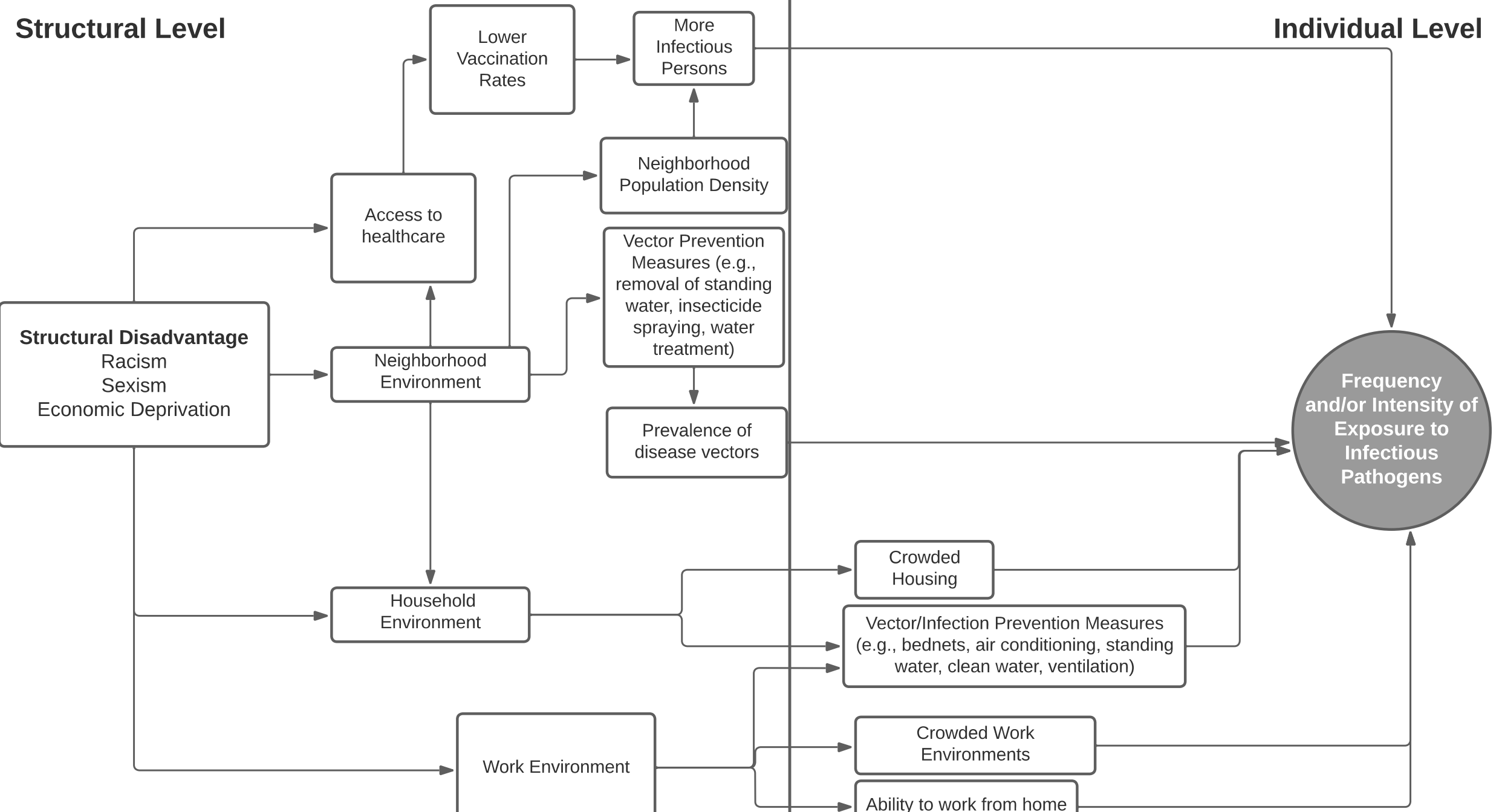
How do the SDOH apply to infectious diseases?

Infectious disease risk = susceptibility + exposure

Taken from: Noppert GA, Hegde ST, Kubale JT. Exposure, Susceptibility, and Recovery: A Framework for Examining the Intersection of the Social and Physical Environments and Infectious Disease Risk. *American Journal of Epidemiology*. 2022 Oct 18.

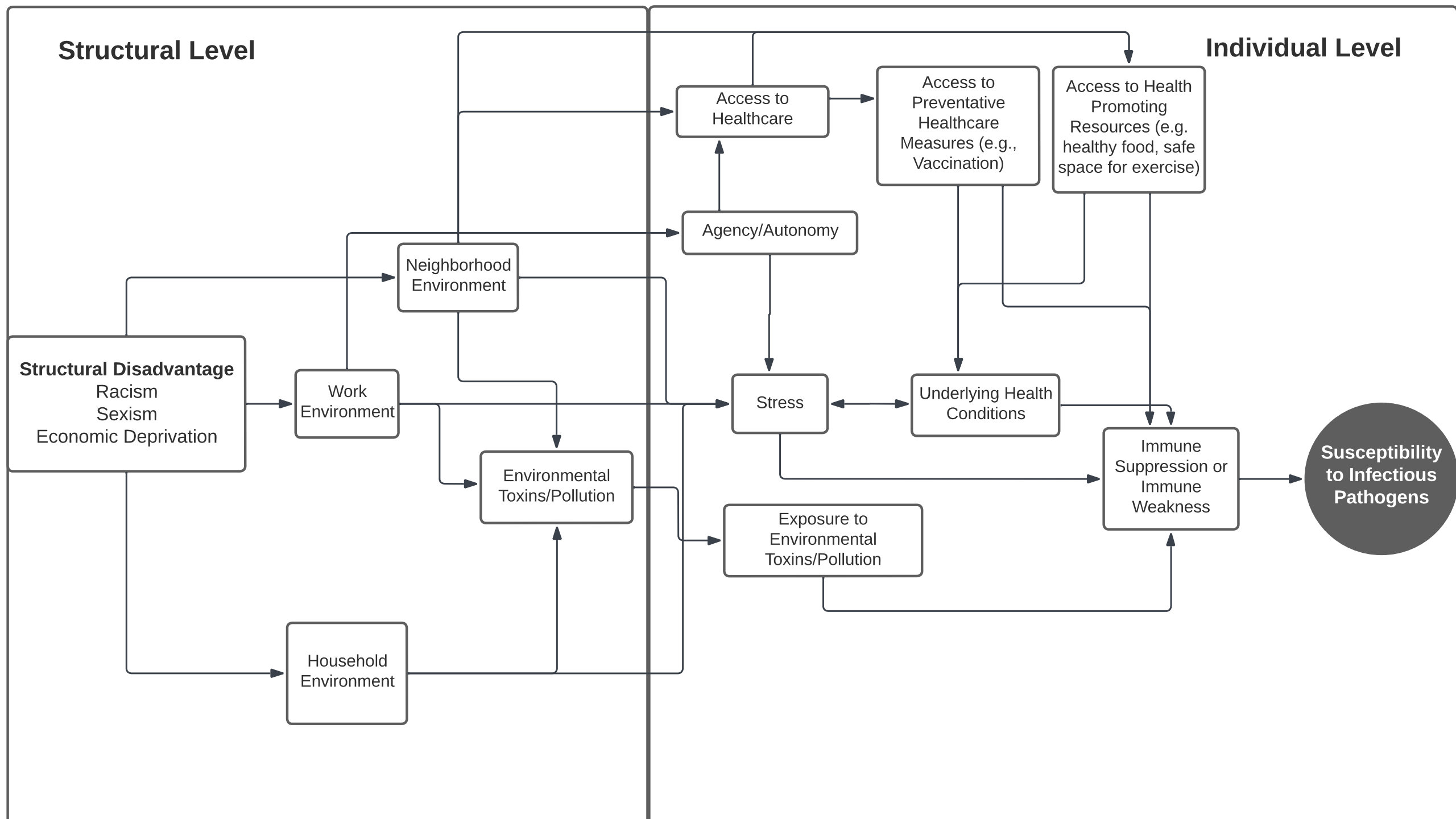
Structural Level

Individual Level



Structural Level

Individual Level



Structural Disadvantage
Racism
Sexism
Economic Deprivation

Work Environment

Neighborhood Environment

Household Environment

Environmental Toxins/Pollution

Access to Healthcare

Agency/Autonomy

Stress

Access to Preventative Healthcare Measures (e.g., Vaccination)

Access to Health Promoting Resources (e.g. healthy food, safe space for exercise)

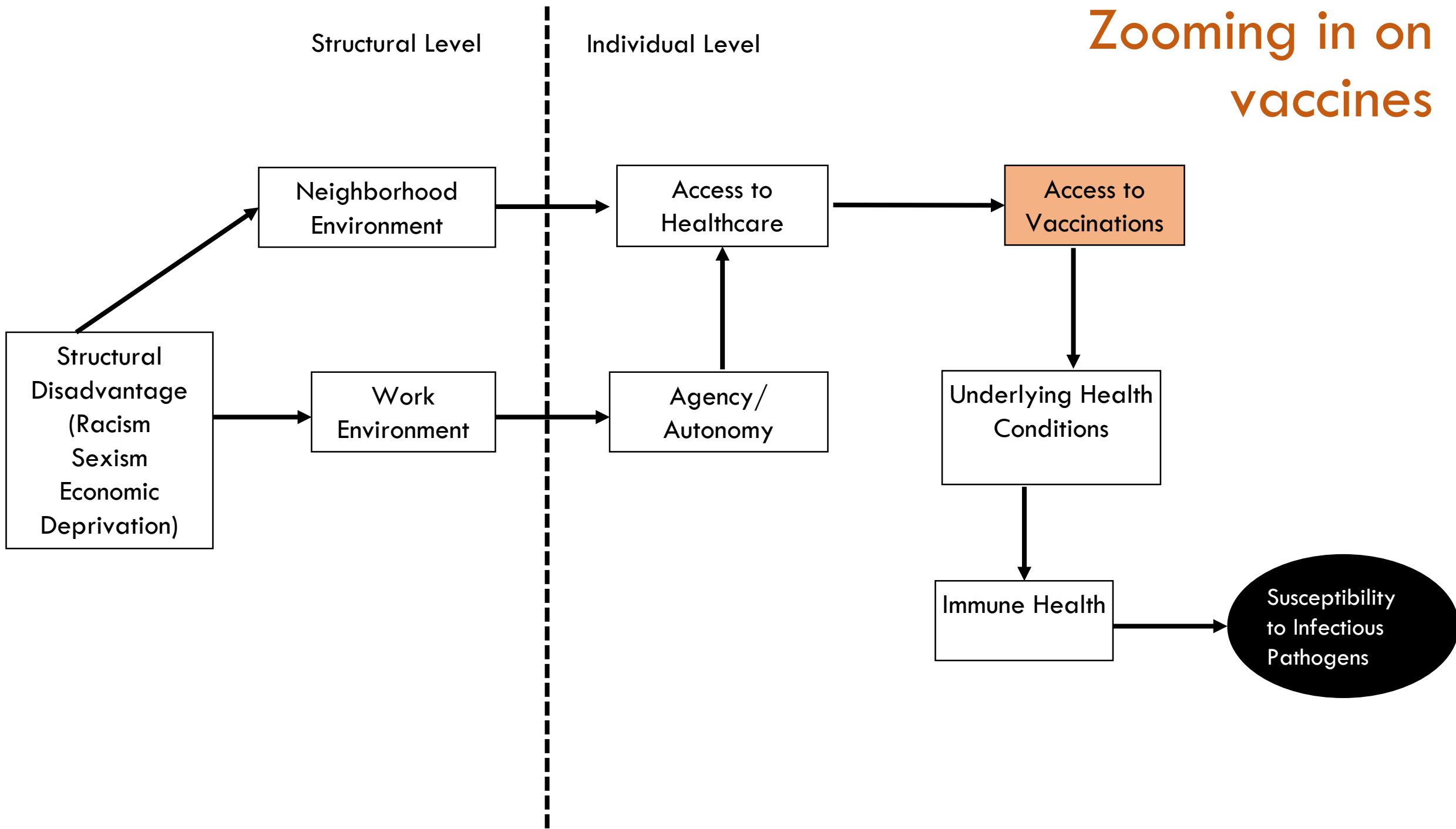
Underlying Health Conditions

Exposure to Environmental Toxins/Pollution

Immune Suppression or Immune Weakness

Susceptibility to Infectious Pathogens

Zooming in on vaccines



Example of SDOH in action:

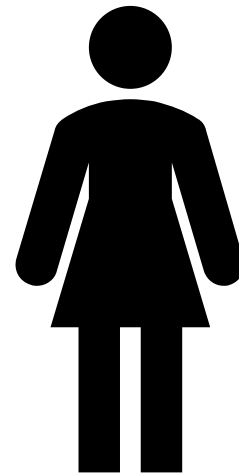
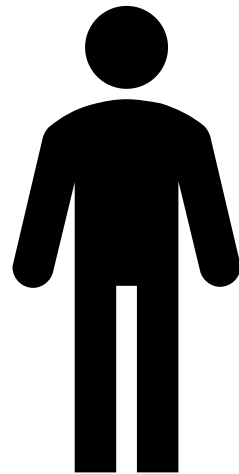
Tuberculosis treatment in Detroit.



What might it look like to address the SDOH?

Scenario: Suppose you are trying to get people to get a flu shot. What are all the ways that the SDOH might affect their ability or probability of getting the shot?

ADDRESSING THE SDOH: SEEING THE WHOLE PERSON.

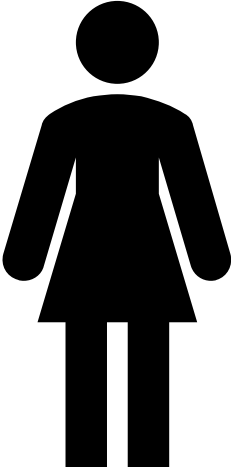




Do I have
childcare?

Do I have
transportation?

Why is it
important to
get a vaccine in
the first place?



Can I take off
work to go get
a vaccine?

Are there any
vaccine clinics
close to me?

How much will
this cost me?

QUESTIONS/COMMENTS?

Get in touch!

Grace Noppert

gnoppert@umich.edu

@gracenoppert 

<https://gracenoppert.isr.umich.edu/>

Funding Support

NIA R00 AG62749 (PI Noppert)

NIA R01 AG075719 (MPI Noppert & Aiello)

NINR / NIMHD U01 NR020556 (MPI Noppert & Clarke)



**SOCIAL AND ENVIRONMENTAL
EQUITY IN INFECTIOUS DISEASE LAB**
UNIVERSITY OF MICHIGAN

Satisfaction Poll & Upcoming Events

Upcoming Learning Events:

Register NOW:

- March 6th, 12 pm – 1 pm EST: [Creating Compelling Conference Abstracts](#)
- March 15th, 12 pm – 1pm EST: [That's Not Fair: Using the Spatial Equity Data Tool to Measure Geographic Disparities](#) (workshop – space will be limited)
- March 13th, 2 pm – 3pm EST, Media 101 Training with the Urban Institute Media Relations Team, more details soon!

Full events calendar available on our website:

vaccineequity.urban.org