

# Partnering for **Vaccine Equity**



Learning Community [Immigration Policy  
and Social Determinants of Health]  
6.21.23



# Zoom Meeting Features

- Participants will **remain muted** during this meeting, but you can use the **raised hand feature** to be unmuted to ask a question, OR
- Use **the chat box** in Zoom task bar to submit a question at any time
- **Live Spanish interpretation:** for meetings offering this option, access the interpretation option in the Zoom toolbar (Globe icon)
- **Technical problems?** Email [vaxequitylearning@urban.org](mailto:vaxequitylearning@urban.org)

# Today's Speaker



**Dr. William D. Lopez, PhD and MPH**  
University of Michigan School of  
Public Health

---

# How Immigration Enforcement Makes You Sick



William D. Lopez  
University of Michigan School of Public Health

# Today's agenda

1. Think about various definitions of “health”;
2. Consider the wide-range of factors that shape health;
3. Define immigration enforcement and (be able to) discuss how it can shape health;
4. Consider how immigration enforcement can influence vaccine equity;
5. Q & A

# What is Health?

When I say “health,” what do you usually think of?

When I say “health” to the (non health-oriented) public, what do they usually think of?

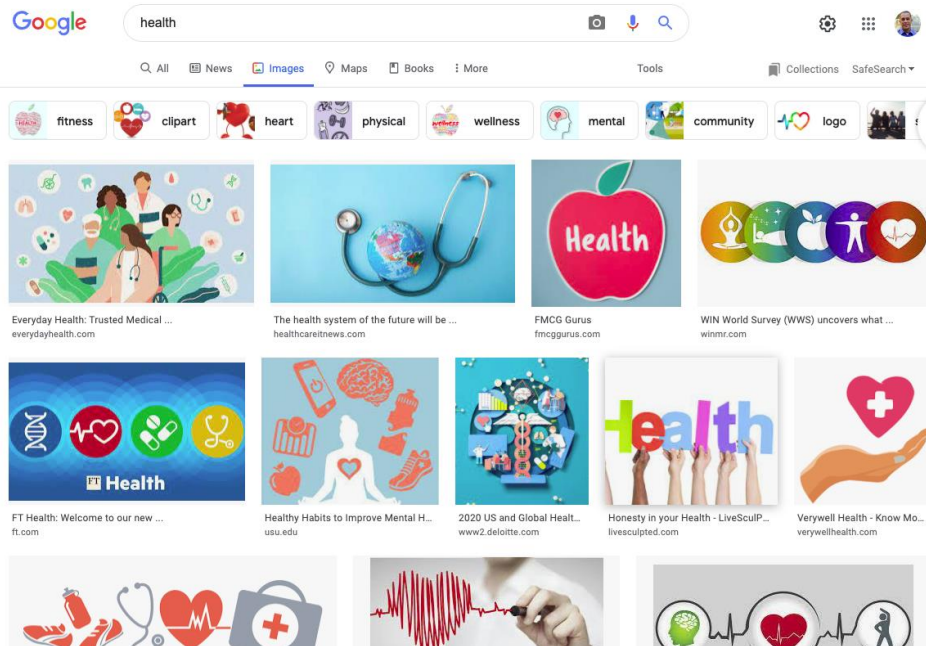
# What is Health? What does google think?

The image shows a Google search interface with the search term "health". Below the search bar, there are navigation tabs for "All", "News", "Images", "Maps", "Books", and "More". The "Images" tab is selected. Below the navigation tabs, there are several suggested search terms: "fitness", "clipart", "heart", "physical", "wellness", "mental", "community", and "logo".

The search results are displayed as a grid of image thumbnails. Each thumbnail includes a small image and a caption with a link to the source website. The thumbnails are:

- Everyday Health: Trusted Medical ...** everydayhealth.com: An illustration of healthcare professionals (nurses, doctors, a patient) surrounded by various medical icons.
- The health system of the future will be ...** healthcareitnews.com: A stethoscope resting on a globe.
- FMCG Gurus** fmcggurus.com: A red apple with the word "Health" written on it.
- WIN World Survey (WWS) uncovers what ...** winmr.com: A row of five circular icons representing different aspects of health: a flame, a plus sign, an apple, a person, and a heart.
- FT Health: Welcome to our new ...** ft.com: A blue background with four circular icons: a DNA helix, a heart with a pulse line, two pills, and a stethoscope.
- Healthy Habits to Improve Mental H...** usu.edu: A silhouette of a person with a heart inside, surrounded by icons for a smartphone, a brain, a calendar, a shopping bag, and a shoe.
- 2020 US and Global Healt...** www2.deloitte.com: A circular collage of various health-related icons including a DNA helix, a microscope, a person, and a heart.
- Honesty in your Health - LiveSculP...** livesculpted.com: The word "health" in colorful letters, with hands holding up the letters.
- Verywell Health - Know Mo...** verywellhealth.com: A hand holding a red heart with a white cross on it.
- Thumbnail 1:** A row of icons including a running shoe, a stethoscope, a heart with a pulse line, and a first aid kit.
- Thumbnail 2:** A hand holding a pen over a red ECG line.
- Thumbnail 3:** A row of icons including a brain, a heart, a person, and a stethoscope.

# What is Health? What does google think?



**Diet  
Exercise  
Medicine  
Hospitals**

**INDIVIDUAL DECISION  
MAKING**

**INDIVIDUALY PROVIDED  
HEALTHCARE**



# Health

Robert Wood Johnson Foundation: “Health means **physical** and **mental** health status and well-being, distinguished from health care.”

## CONSTITUTION OF THE WORLD HEALTH ORGANIZATION<sup>1</sup>

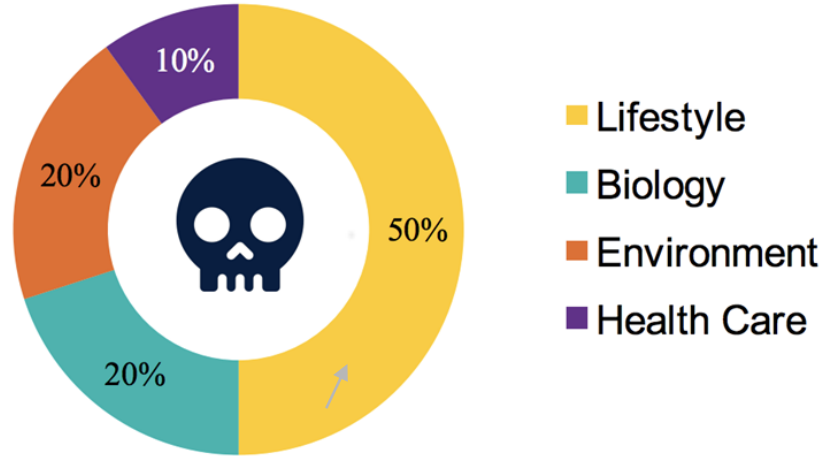
THE STATES Parties to this Constitution declare, in conformity with the Charter of the United Nations, that the following principles are basic to the happiness, harmonious relations and security of all peoples:

Health is a state of complete physical, mental and social well-being and not merely the absence of disease or infirmity.

The enjoyment of the highest attainable standard of health is one of the fundamental rights of every human being without distinction of race, religion, political belief, economic or social condition.

# What Compromises Health Outcomes?

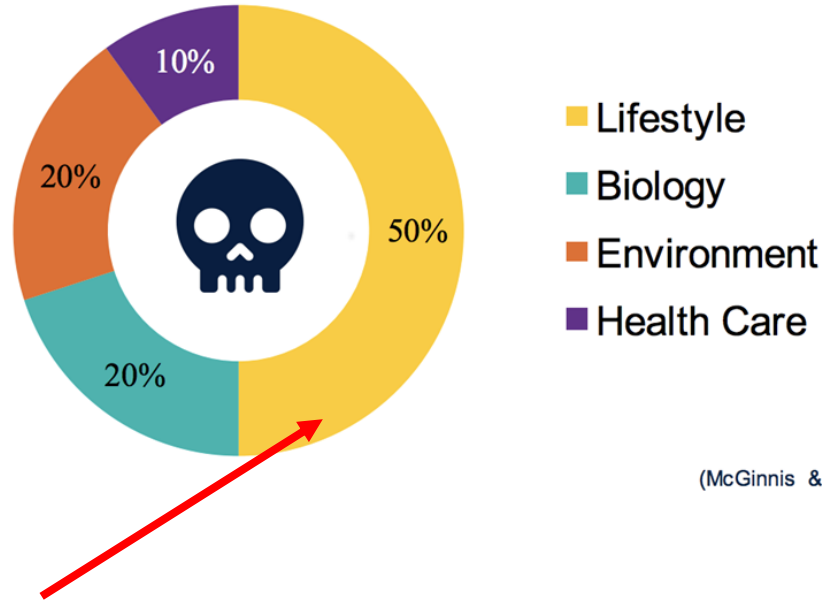
## Causes of Premature / Preventable Death



(McGinnis & Foege, 1993; McGinnis 2013)

# What Compromises Health Outcomes?

## Causes of Premature / Preventable Death



(McGinnis & Foege, 1993; McGinnis 2013)

Consider: What factors shape your “lifestyle”?

# Social Determinants of Health

“Health starts in our **homes, schools, workplaces, neighborhoods, and communities**. ... Our health is also determined in part by access to **social and economic opportunities**; the resources and supports available in our homes, neighborhoods, and communities; the quality of our **schooling**; the safety of our **workplaces**; the cleanliness of our **water**, food, and air; and the nature of our **social interactions** and relationships.”

# Social Determinants of Health

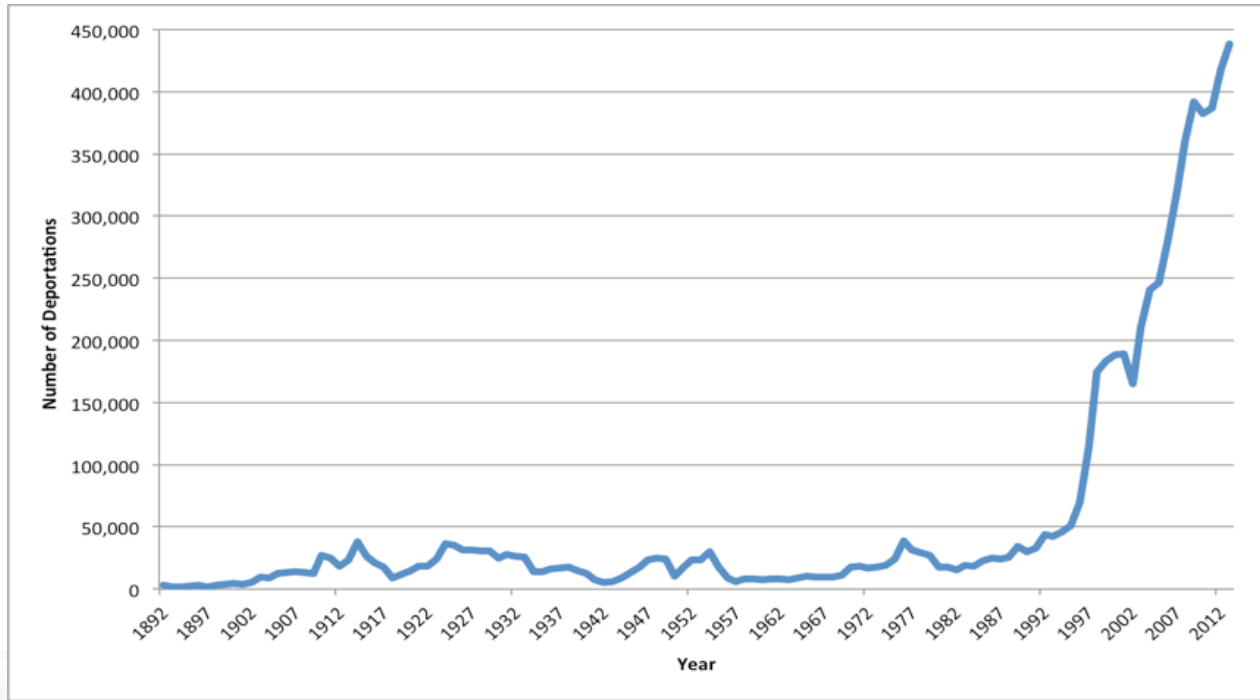
*...are conditions where people live, learn, work, and play.*

-CDC <https://www.cdc.gov/socialdeterminants/index.htm>

# SDOH Examples:

1. Access to health care services
2. Transportation options
3. Public safety
4. Social support
5. Social norms and attitudes (e.g., discrimination, racism, and distrust of government)
6. Socioeconomic conditions (e.g., concentrated poverty and the stressful conditions that accompany it)
7. Residential segregation
8. Language/Literacy
9. Access to mass media and emerging technologies (e.g., cell phones, the Internet, and social media)

# Removals (Deportations) from the U.S. from 1892 to 2013

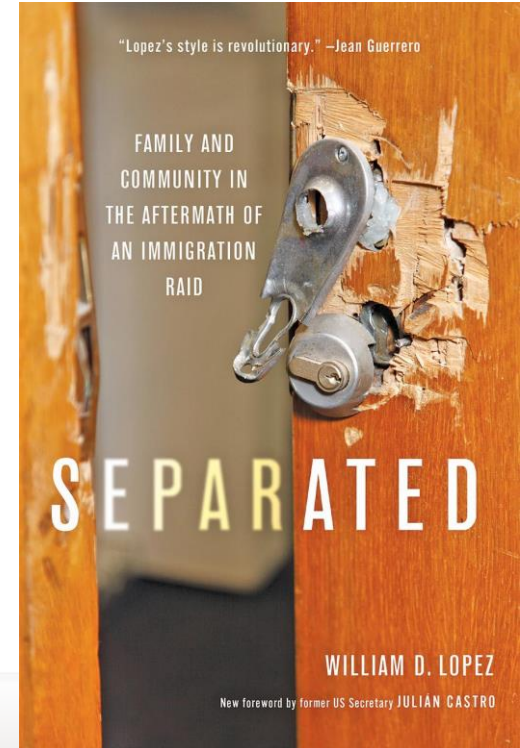


Source: U.S. Department of Homeland Security, Customs and Border Protection (CBP) U.S. Border Patrol (USBP), Immigration and Customs Enforcement (ICE) Homeland Security Investigations (HSI), and the Office of Enforcement and Removal Operations (ERO). Yearbook of Immigration Statistics: 2013. Enforcement Actions, Table 39.

# Immigration Enforcement Is/Was Increasingly Militaristic

---

- Pre-dawn hours
- Agents in body armor with weapons
- Pounding on doors and windows
- Occupants placed in central location
- “Collateral” arrests made
- Documents taken
- Often many witnesses, including children
- Increasing in frequency





# Immigration Work Raids

---



# Immigration Enforcement and Health: 3 Pathways

---

- Pathway 1: Actual Detention and Deportation
- Pathway 2: Threat of Deportation→ Physiological changes
- Pathway 3: Threat of Deportation→ Behavioral changes



# Pathway 1: Detention and Deportation

---

For those detained/deported

1. Detention centers = human rights violations
2. Removal from social support networks
3. Violence in country of birth

For those in the U.S.:

1. Acute poverty
2. “Suddenly single mothers”
3. Dissolution of the family



## Pathway 2: Physiological Changes

---

1. Activation of “fight or flight” response (for example, during a traffic stop)
1. Frequent activation creates wear and tear on multiple physiological systems
1. Chronic activation can result in, hypertension, sleep difficulties, weight changes



## Pathway 3: Behavioral Changes

---

1. Confinement to one's home
2. Avoidance of social services
3. Avoidance of certain areas or people



---

What do these pathways  
have to do with vaccine  
equity?



# Pathway 1: Detention and Deportation

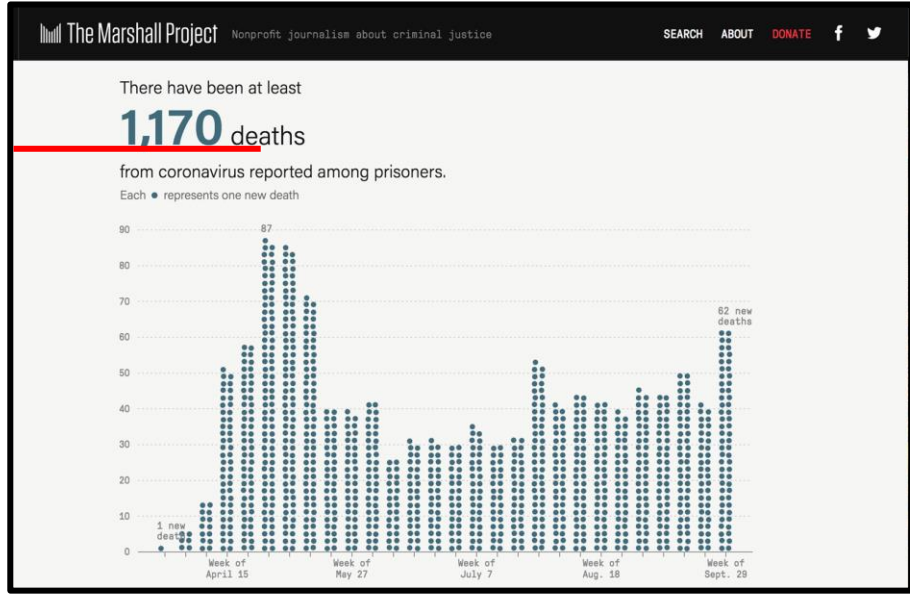
Cases

Total Costa Rica

Cases	Recovered	Deaths
79,182	45,007	950

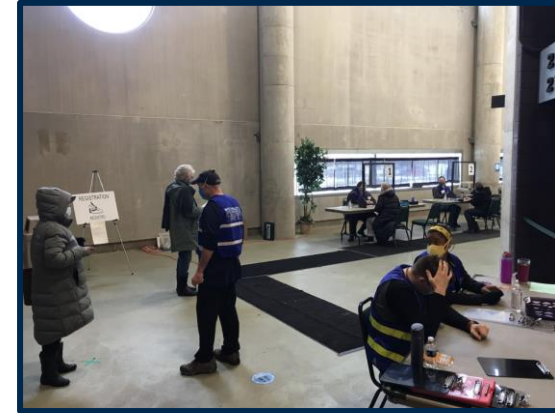
Location	Cases ↓	Recovered	Deaths
San José	38,350	-	-
San José Province	23,786	9,435	297
Alajuela	12,999	-	-
Heredia	8,741	-	-
Alajuela Province	6,680	2,409	56

"+" shows new cases reported yesterday · Updated less than 1 day ago · Source: [Wikipedia](#) · [About this data](#)



# Pathway 2: Behavior Change

---





- 
- **William:** You were talking about how frightened you were from *las patrullas*. Do you feel this same fear when you, for example, go to the clinic or a government office, something like that?
  - **Guadalupe:** No, no.
  - **William:** Why not?
  - **Guadalupe:** I don't know. Maybe it's because in clinics and such I have received that help [before the raid]. Well, in my mind it's the police. The police are the ones who took away the father of my daughters, the ones who took away my brother. They are the ones who took away my family, who, if they detained me, would separate me from my kids.



- 
- **William:** And do you use services in Washtenaw County?
  - **Guadalupe:** Yes, I have the Washtenaw Health Plan [an insurance program for low-income residents of Washtenaw County].
  - **William:** And you had this before the raid too?
  - **Guadalupe:** Yes, I had it before, yes.
  - **William:** Ok. So after the raid you used the same services [as you did before]?
  - **Guadalupe:** I asked when I went to [renew my Washtenaw Health Plan insurance], because of [the raid], if there would be any problems. Because they had my name and all that, But they told me no, I shouldn't worry. Nothing will happen.
  - **William:** OK. So you have confidence in the person who discussed this with you?
  - **Guadalupe:** Well, yes, because I thought that they know more about this than I do. She told me that all the information was confidential and that if I wanted anyone to know something I had to sign first to authorize it.

- 
- **Guadalupe:** The truth is that in that moment, when they told me [that my name would remain confidential], I thought it was a lie and I was scared. I had [the address of a friend, who is a white US citizen. I used that address] so that my bills could go there. I didn't want to give my address, where I was, nothing.
  - **William:** So, immediately after the raid, you didn't want to share your address? Not with the Washtenaw Health Plan, not with anyone?
  - **Guadalupe:** No, nothing like that [I wanted to share this information] with no one. Including food stamps for the kids. I didn't want to renew anything **because I was so scared of everything.**



# Pathway 2: Behavior Change

---



# Take-aways

---

1. 🦋 Migration is beautiful 🦋
2. Immigration enforcement—just like policing—drastically shapes where we live, work and play
3. You probably have influence over SOME aspect of immigration enforcement (do you ask for a license? Do you vote for a sheriff who doesn't collaborate with ICE?)
4. Behavior change can be good!
5. Continue to educate yourself!

# Thank you!

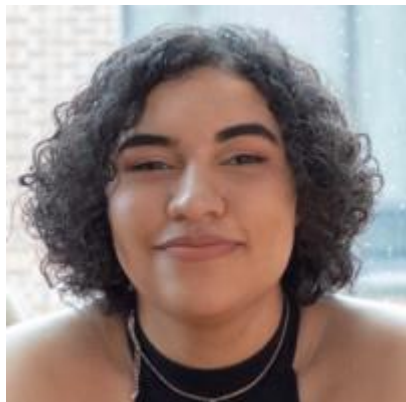
---

- Email: [wdlopez@umich.edu](mailto:wdlopez@umich.edu)
- Twitter: @lopez\_wd
- Book: [Separated: Family and Community in the Aftermath of an Immigration Raid](#)
- Art: [ICE in the Heartland](#)
- 🏳️🌈 **Happy Pride!** 🏳️🌈



# Thank you to artists Dalia Harris and Carolina Jones

---



# Event Satisfaction Poll and Announcements

- **Pathways to Population Health Equity**
  - Friday, June 23 | 11 am – 12 pm EST
- **Tools and Tactics to Meet Your Social Media Goals**
  - Wednesday, June 28 | 3:30 pm – 4:30 pm EST
- **Conversations on Vaccine Equity After the End of the Public Health Emergency (Discussion Session)**
  - Thursday, June 29 | 12 pm – 1 pm EST



Partnering for **Vaccine Equity**

