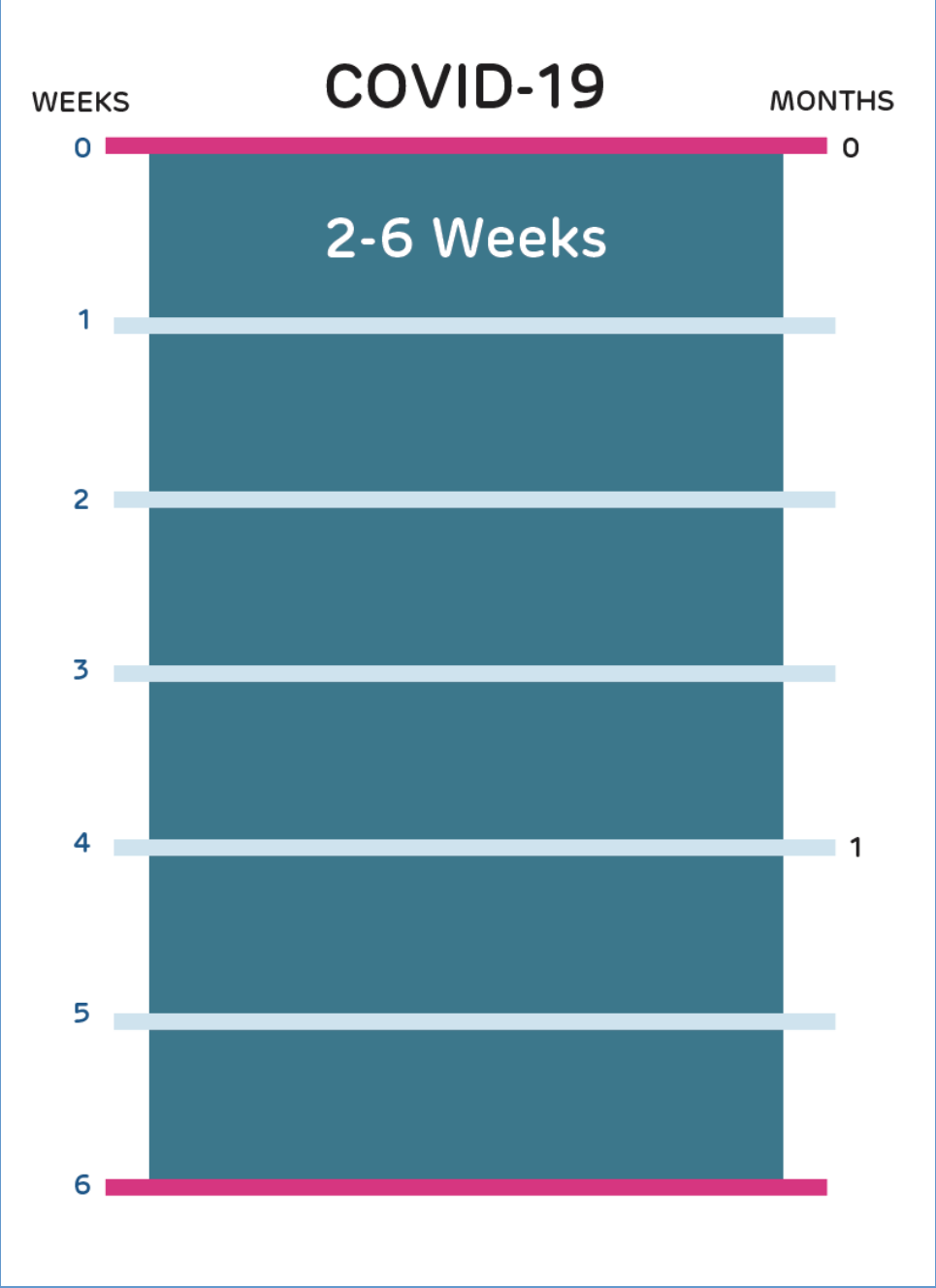


COVID-19: THE DISEASE VS THE VACCINE

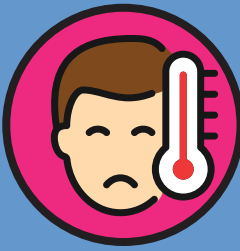
ABOUT THE COVID-19 DISEASE

Typical Length of Illness

Symptoms appear about 6 days after exposure and last 1-2 weeks in most people, but some can have symptoms for 6 weeks to several months.



Symptoms of COVID-19



Fever



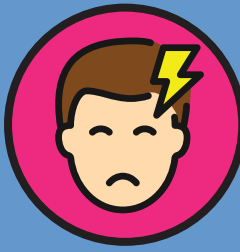
Fatigue



Sore throat



Dry cough



Headache



Nasal congestion

Other symptoms can include: loss of taste or smell, pink eye, muscle or joint pain, nausea or vomiting, diarrhea, loss of appetite, and rash or discoloration of fingers or toes.

Possible Complications:

- Infection of the lungs
- Respiratory failure
- Bloodstream infection
- Multisystem inflammatory syndrome (MIS-C or MIS-A)
- Death

ABOUT THE COVID-19 VACCINE

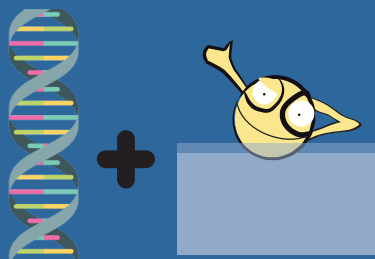
Types of Vaccines (in U.S.)

mRNA



(Pfizer & Moderna)

VECTOR VIRUS



(J&J/Janssen)

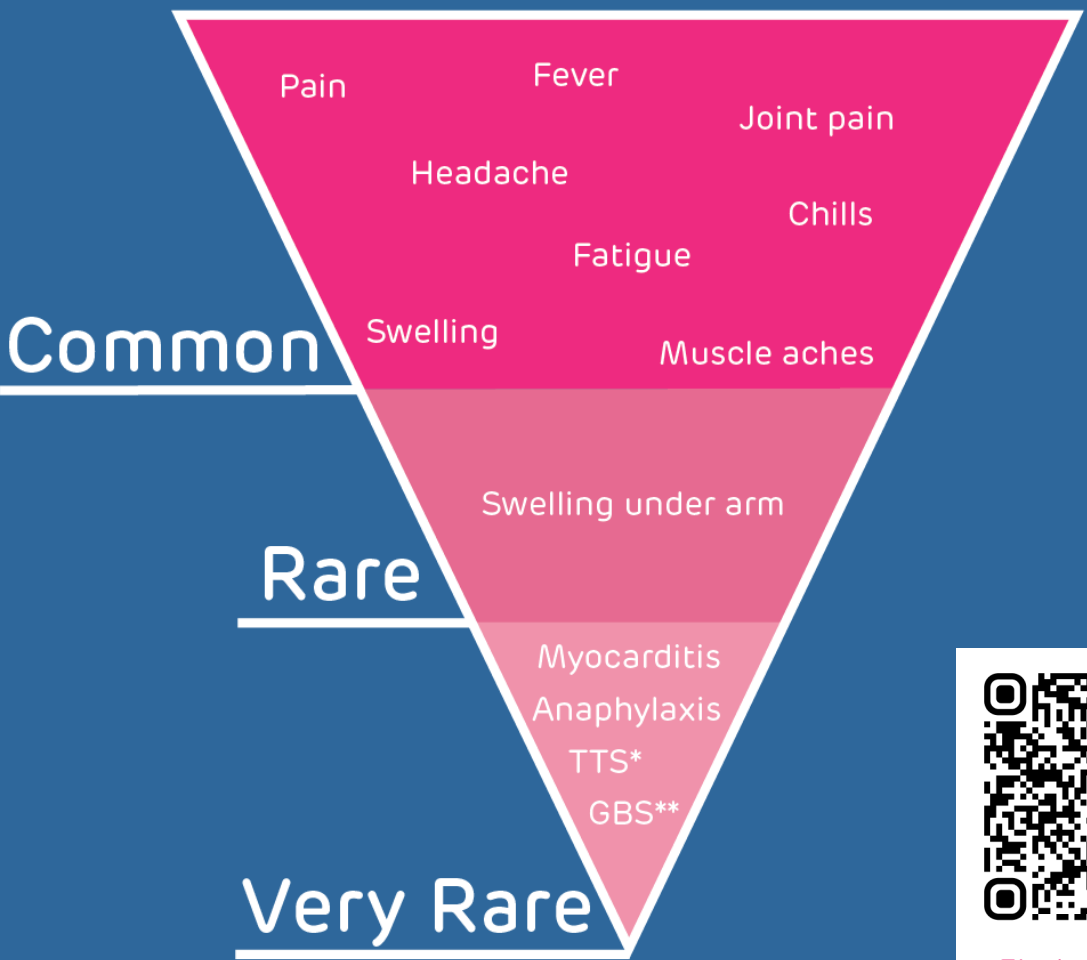
PROTEIN



(Novavax)

Vaccine Side Effects

In most cases vaccine side effects last 1 to 2 days.



*Thrombosis with thrombocytopenia syndrome
**Guillain-Barré syndrome



Find out more!